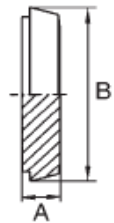


Blind Gewindestutzen DIN 11851

| DN | Inch | ISO | A | B | kg | 304 | 316L |
|--------|--------|---------------|-------|------------|------|-----------|-----------|
| | | | | | | Art. Nr. | Art. Nr. |
| DN 10 | | DN 10 17.20 | 21.00 | Rd28x1/8" | 0.06 | 117000101 | 117000103 |
| DN 15 | | DN 15 21.30 | 21.00 | Rd34x1/8" | 0.09 | 117000151 | 117000153 |
| DN 20 | | DN 20 26.90 | 24.00 | Rd44x1/6" | 0.13 | 117000201 | 117000203 |
| DN 25 | 1" | DN 25 33.70 | 24.00 | Rd52x1/6" | 0.19 | 117000251 | 117000253 |
| DN 32 | 1 1/4" | DN 32 42.40 | 24.00 | Rd58x1/6" | 0.21 | 117000321 | 117000323 |
| DN 40 | 1 1/2" | DN 40 48.30 | 24.00 | Rd65x1/6" | 0.25 | 117000401 | 117000403 |
| DN 50 | 2" | DN 50 60.30 | 24.00 | Rd78x1/6" | 0.33 | 117000501 | 117000503 |
| DN 65 | 2 1/2" | DN 65 76.10 | 28.00 | Rd95x1/6" | 0.54 | 117000651 | 117000653 |
| | 3" | | 30.00 | Rd104x1/6" | 0.81 | 117000751 | 117000753 |
| DN 80 | | DN 80 88.90 | 30.00 | Rd110x1/4" | 0.95 | 117000801 | 117000803 |
| DN 100 | 4" | DN 100 114.30 | 30.00 | Rd130x1/4" | 1.11 | 117001001 | 117001003 |



Blind Kegelstutzen 11851

| DN | Inch | ISO | A | B | kg | 304 | 316L |
|--------|--------|---------------|-------|--------|------|-----------|-----------|
| | | | | | | Art. Nr. | Art. Nr. |
| DN 10 | | DN 10 17.20 | 9.00 | 22.00 | 0.02 | 118000101 | 118000103 |
| DN 15 | | DN 15 21.30 | 9.00 | 28.00 | 0.04 | 118000151 | 118000153 |
| DN 20 | | DN 20 26.90 | 11.00 | 36.00 | 0.07 | 118000201 | 118000203 |
| DN 25 | 1" | DN 25 33.70 | 13.00 | 44.00 | 0.12 | 118000251 | 118000253 |
| DN 32 | 1 1/4" | DN 32 42.40 | 13.00 | 50.00 | 0.16 | 118000321 | 118000323 |
| DN 40 | 1 1/2" | DN 40 48.30 | 13.00 | 56.00 | 0.22 | 118000401 | 118000403 |
| DN 50 | 2" | DN 50 60.30 | 14.00 | 68.50 | 0.36 | 118000501 | 118000503 |
| DN 65 | 2 1/2" | DN 65 76.10 | 16.00 | 86.00 | 0.66 | 118000651 | 118000653 |
| | 3" | | 16.00 | 93.00 | 0.89 | 118000751 | 118000753 |
| DN 80 | | DN 80 88.90 | 16.00 | 100.00 | 0.91 | 118000801 | 118000803 |
| DN 100 | 4" | DN 100 114.30 | 20.00 | 121.00 | 1.67 | 118001001 | 118001003 |
| DN 125 | | DN 125 139.70 | 22.00 | 150.00 | 2.84 | 118001251 | 118001253 |
| DN 150 | | DN 150 168.30 | 24.00 | 176.00 | 4.29 | 118001501 | 118001503 |