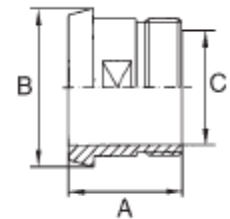


## Gewinde Einschraubstutzen DIN 11851

DN	A	B	C	kg	304	316L
					Art. Nr.	Art. Nr.
DN 10	40.00	Rd28x1/8"	G 3/8"	0.06	128000101	128000103
DN 15	40.00	Rd34x1/8"	G 1/2"	0.09	128000151	128000153
DN 20	42.00	Rd44x1/6"	G 3/4"	0.15	128000201	128000203
DN 25	48.00	Rd52x1/6"	G 1"	0.22	128000251	128000253
DN 32	48.00	Rd58x1/6"	G 1 1/4"	0.31	128000321	128000323
DN 40	50.00	Rd65x1/6"	G 1 1/2"	0.40	128000401	128000403
DN 50	52.00	Rd78x1/6"	G 2"	0.54	128000501	128000503
DN 65	56.00	Rd95x1/6"	G 2 1/2"	0.71	128000651	128000653
DN 80	66.00	Rd110x1/4"	G 3"	0.95	128000801	128000803
DN 100	72.00	Rd130x1/4"	G 4"	1.48	128001001	128001003



## Kegel Einschraubstutzen DIN 11851

DN	A	B	C	kg	304	316L
					Art. Nr.	Art. Nr.
DN 10	38.00	22.00	G 3/8"	0.03	127000101	127000103
DN 15	38.00	28.00	G 1/2"	0.05	127000151	127000153
DN 20	40.00	36.00	G 3/4"	0.09	127000201	127000203
DN 25	50.00	44.00	G 1"	0.14	127000251	127000253
DN 32	50.00	50.00	G 1 1/4"	0.24	127000321	127000323
DN 40	50.00	56.00	G 1 1/2"	0.27	127000401	127000403
DN 50	50.00	68.50	G 2"	0.35	127000501	127000503
DN 65	55.00	86.00	G 2 1/2"	0.53	127000651	127000653
DN 80	60.00	100.00	G 3"	0.67	127000801	127000803
DN 100	70.00	121.00	G 4"	1.22	127001001	127001003