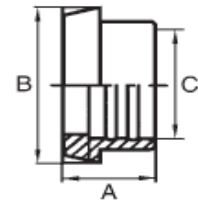

Walzgewindestutzen DIN 11851 304

DN	Inch	A	B	C	kg	Art. Nr.
DN 10		21.00	Rd28x1/8"	12.20	0.03	105000101
DN 15		21.00	Rd34x1/8"	18.20	0.05	105000151
DN 20		24.00	Rd44x1/6"	22.20	0.10	105000201
	1"	29.00	Rd52x1/6"	25.60	0.12	105011001
DN 25		29.00	Rd52x1/6"	28.20	0.12	105000251
	1 1/4"	32.00	Rd58x1/6"	32.00	0.15	105011141
DN 32		32.00	Rd58x1/6"	34.20	0.15	105000321
	1 1/2"	33.00	Rd65x1/6"	38.30	0.20	105011121
DN 40		33.00	Rd65x1/6"	40.20	0.20	105000401
	2"	35.00	Rd78x1/6"	51.00	0.29	105012001
DN 50		35.00	Rd78x1/6"	52.20	0.29	105000501
	2 1/2"	40.00	Rd95x1/6"	63.80	0.44	105012121
DN 65		40.00	Rd95x1/6"	70.30	0.44	105000651
	3"	40.00	Rd104x1/6"	76.40	0.58	105013001
DN 80		45.00	Rd110x1/4"	85.30	0.58	105000801
DN 100		54.00	Rd130x1/4"	104.30	0.87	105001001
	4"	54.00	Rd130x1/4"	102.00	0.87	105014001


Walzkegelstutzen DIN 11851 304

DN	Inch	A	B	C	kg	Art. Nr.
DN 10		17.00	22.50	12.20	0.02	106000101
DN 15		17.00	28.50	18.20	0.03	106000151
DN 20		18.00	36.50	22.20	0.05	106000201
	1"	22.00	44.00	28.20	0.09	106011001
DN 25		22.00	44.00	25.60	0.09	106000251
	1 1/4"	25.00	50.00	34.20	0.11	106011141
DN 32		25.00	50.00	32.00	0.11	106000321
	1 1/2"	26.00	56.00	40.20	0.14	106011121
DN 40		26.00	56.00	38.30	0.14	106000401
	2"	28.00	68.50	52.20	0.22	106012001
DN 50		28.00	68.50	51.00	0.22	106000501
	2 1/2"	32.00	86.00	63.80	0.31	106012121
DN 65		32.00	86.00	70.30	0.31	106000651
	3"	32.00	93.00	76.40	0.40	106013001
DN 80		37.00	100.00	85.30	0.40	106000801
DN 100		44.00	121.00	104.30	0.68	106001001
	4"	44.00	121.00	102.00	0.68	106014001